

# KOF3001

Configurable panels  
linkable to all NS3001  
panel types for a free  
configurable assembly

## KOF3001

Panels for individual assembly.

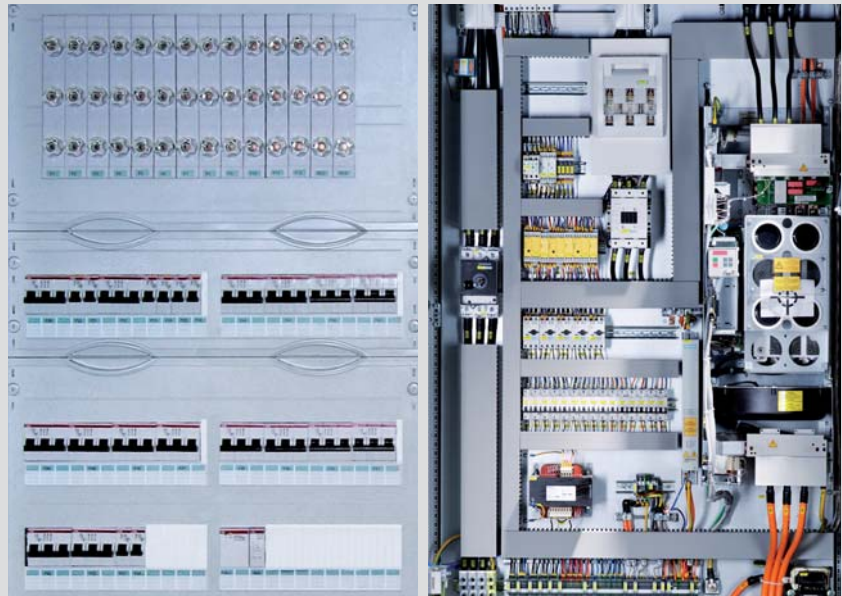
Panel with mounting plate for individual assembly with switching equipment, frequency converters or other devices.

Alternatively the panel can be used as an stand alone distribution panel for the support of electrical installation devices.

### Field of Application

These panels are applicable in the building services and the industry version.

The panels of the industry version are tested in regard to the appearance of inner faults (internal accidental arcing).



### RITTER Starkstromtechnik GmbH & Co. KG

P.O. box 50 04 08, D-44204 Dortmund  
Luisenglück 20, D-44225 Dortmund (Barop)  
Phone +49-231-77 55-0  
Fax +49-231-77 55-111  
dortmund@ritter-starkstromtechnik.de

### Factory for Switchgears

P.O. box 64, D-59395 Olfen  
Niekamp 8, D-59399 Olfen  
Phone +49-25 95-3 81-0  
Fax +49-25 95-3 81-233  
olfen@ritter-starkstromtechnik.de

### Technical Data

Dependent of the assembly

### Panel Dimensions

Type	panel width	panel depth	panel height
IP31	1000 mm	660 mm	2300 mm
IP41	1000 mm	660 mm	2400 mm